

## Art

Experiment with different grades of pencils to create an outline of the rainforest and add depth to a picture through shading. Appraise the artists Oenone Hammersley and Henri Rousseau and recreate their work using shading with wax crayons and pastels.



## Design and Technology

To research and develop design criteria to inform the design of innovative, functional, appealing products that are fit for purpose, aimed at particular individuals or groups  
To generate, develop, model and communicate their ideas through discussion and annotated sketches.  
To select from and use a wider range of tools and equipment to perform practical tasks

## Physical Education

### Athletics

Athletics Refining throwing, jumping and running skills. Devising small games and evaluating own performance.

### Outdoor Adventurous Activities

Pupils to take part in outdoor and adventurous activity challenges both individually and within a team. Pupils should enjoy communicating, collaborating and competing with each other.

### Sending and receiving

Children develop and learn coordination, sending and receiving, and balance skills.  
Children understand the simple tactics of attacking and defending.

## Science

### Animals including humans

To discuss how to keep teeth healthy; plan and set up an investigation into tooth decay.  
To draw conclusions from an investigation about keeping teeth healthy and to identify and examine different types of teeth.  
To identify the parts and process of the digestive system their function.  
To construct food chains for different habitats and explain findings using the correct scientific language.

### Living Things

I can group living things in a range of ways  
To identify vertebrates by observing their similarities and differences.  
To recognise positive and negative changes to the local environment.  
To describe environmental dangers to endangered species.

## Maths

### Fractions/Decimals:

Reason about the location of mixed numbers in the linear number system. Convert mixed numbers to improper fractions and vice versa. Add and subtract improper and mixed fractions with the same denominator, including bridging whole numbers.

### Properties of shapes

To draw 2-D shapes and make 3-D shapes. To identify right angles. To identify whether angles are greater than or less than a right angle. To identify perpendicular and parallel lines.

### Measurements

To estimate, compare and calculate different measures, including money in pounds and pence.  
To read, write and convert time between analogue and digital 12 and 24-hour clocks. To solve problems involving converting from hours to minutes, minutes to seconds, years to months, weeks to days.

### Statistics

To interpret and present discrete and continuous data using appropriate graphical methods, including bar charts and time graphs. To solve comparison, sum and difference problems using information presented in bar charts, pictograms, tables and other graphs.

# Rainforests

## Literacy

### Kensukes Kingdom

The learning journey develops children's reading comprehension, fluency and vocabulary as they explore the characters, plot and language in the story. Using Kensukes Kingdom as our stimulus we will be writing: a personal narrative, setting description, a diary entry, an informative poster.

### The Great Kapok Tree, Lynne Cherry

In this unit of learning, children will write a persuasive letter, a dilemma story and a non-chronological report.

### Poetry- Rainforest Animals, Over in the Jungle

Children will be introduced to rainforest poems. Children will orally retell the poems and learn the key features of each poem before writing their own rainforest poem.

## Computing

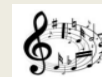
Understand how computational thinking (decomposition, abstraction, pattern recognition, and algorithms) helps solve problems.  
Know that breaking problems into parts and focusing on key details makes solving them easier.  
Identify patterns and design clear algorithms to complete tasks.  
Know that computers use sensors to record and respond to data, like in automated weather machines.  
Understand how weather forecast videos use specific language, expression, and scripts.

### Religious Education

How and why do people try to make the world a better place? (Christian, Sikhs, Muslim, non-religion).  
What are the deeper meanings of religious festivals? (Jewish, Muslim, non-religion, Sikh, Hindu).

### Music

Build on knowledge and understanding of the interrelated dimensions of music through: - Vocal warm ups - Learning to sing the song - Playing instruments with the song - Improvising with the song - Composing with the song - Performance skills



### PSHE

Developing further around health and wellbeing.  
Exploring physical and emotional changes including to their bodies and discussing transitions.  
To understand there are different types of relationships and families. *(These topics will be taught with sensitivity; if you have any questions or concerns about what is going to be covered, please do not hesitate to come and ask.)*

## Geography

To understand what a rainforest is and where they are located in the world and understand where the equator, tropics of Capricorn and Cancer are. To use charts and graphs to compare the climate in the rainforests to forests in the UK. To understand the role the rainforest plays in the water cycle. Research reasons for deforestation and ways we can protect the rainforest.



## History

To investigate how and when Europeans encountered the Mayan civilisation. To explore how we know about the Mayan civilisation and their way of life. To explore how Mayan society was organised and how this compares to modern society. To find out about what the Maya believed in, including their religious rites and rituals. To use a variety of sources to piece together what life was like for the Maya. To exploring the achievements of the Maya including their number systems and calendar.

## French

To know that compass point phrases can be added to the front or end of a weather phrase and it will have the same meaning.  
To know the names and locations of some of the cities in France.